

NMEDIA SYSTEM INC.

2.4GHz RF Wireless Keyboard with Optical Trackball

USER'S MANUAL



2.4GHz RF Wireless Optical Trackball with Optical Trackball

This keyboard and optical trackball combination features built-in hot keys for Internet, Office and Multimedia functions. Utilizing 2.4GHz RF wireless technology, the compact and lightweight device has operating range of up to 15 meters in open space.

Features

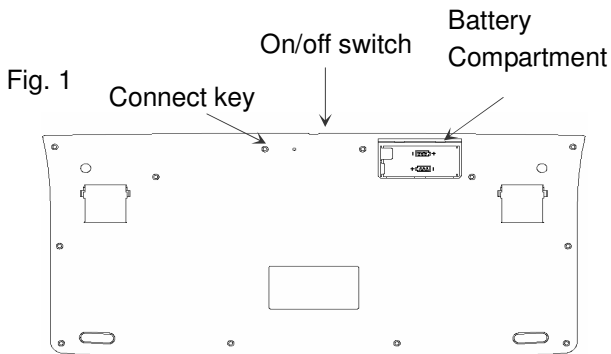
- 2.4GHz ISM band radio frequency
- 8 channels with 4096 IDs avoid interference
- Operating distance up to 50 feet (15 meters)
- Patented optical trackball
- Advanced power saving management
- Multimedia, Internet and Office hot keys
- Fold-down feet provides keyboard tilt for typing
- Windows 98SE/Me/2000/XP/2003/X64 compatible
- FCC & CE approvals
- Dimension : 340L * 163W * 31.5mmH

Package contents

- Wireless keyboard with optical trackball
- USB receiver
- USB extension cable
- 2 AAA alkaline batteries
- Driver and User's manual

Battery installation

Open the cover of the battery compartment by sliding with a thumb. Insert two AAA size alkaline batteries, ensuring that the polarities are correct.



Rechargeable batteries applicable

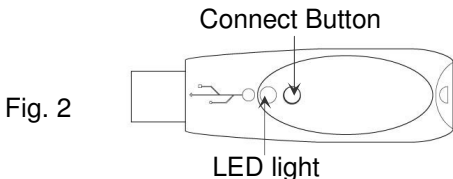
This device can be operated with either standard alkaline batteries or rechargeable batteries. Using rechargeable batteries reduces expenses and is less harmful to the environment.

Caution

Do not mix using alkaline battery and Rechargeable battery at the same time to avoid the risk of battery explosion. (i.e. do not combine an alkaline battery with a rechargeable battery)

Establishing the communication link

Connect the receiver to a USB port of the computer. LED light on the receiver will turn on automatically.



Press and release the Connect button on the receiver to turn off the LED light (Fig.2).

Press the Connect button at the bottom of keyboard (Fig.1). LED light on receiver illuminates, indicating that the setup process has been completed.

Software Installation

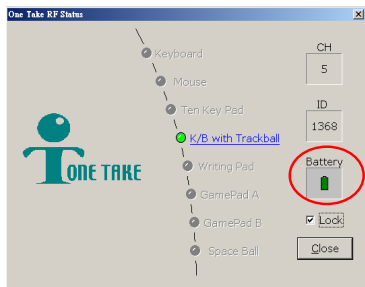
This package includes a CD with driver software for hotkeys. Place the CD in CD ROM of the computer. Execute the “setup.exe” function to complete installation and re-start the computer.

A radar icon will be displayed on Windows task bar to show the status of battery life. Green radar icon shows that battery power is normal. Red color

indicates low battery status. This icon is mainly for reminding user to prepare for new batteries replacement. However, immediate installation of new batteries is not necessary until the keyboard has slower reaction.



Click the radar icon twice with mouse left key to activate the control panel as below.



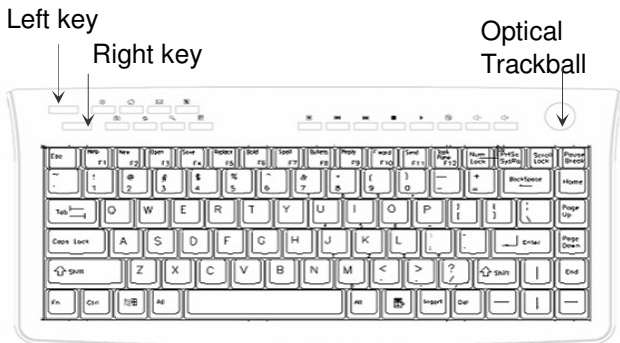
Green color shows that battery power is normal

Click **Close** button to exit the control panel.

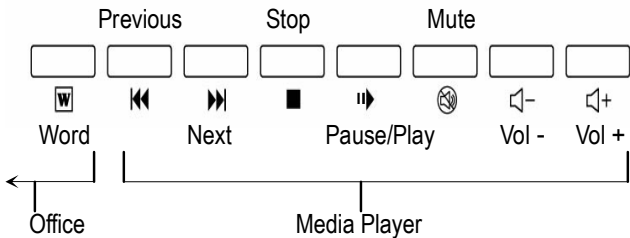
Note: It is required to install the driver in order to activate the hotkeys for Word, Excel, PowerPoint and Outlook Express.

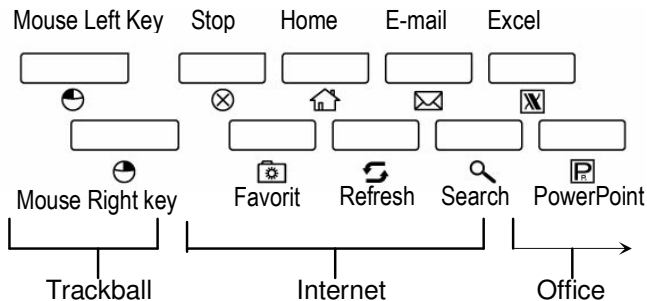
Operating the Keyboard and Trackball

This keyboard has a built-in optical trackball which works as a mouse for moving screen cursor.



It features mouse left and right key, and 16 hot keys to access Office, Internet and Media Player directly.








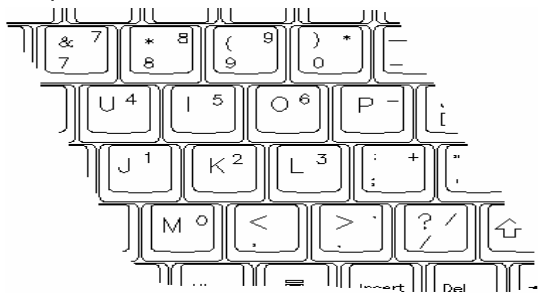
Key definitions of the 12 Function keys on different Office systems.

Help F1	New F2	Open F3	Save F4	Replace F5	Bold F6	Spell F7	Bullets F8	Reply F9	Fward F10	Send F11	Task Pane F12
------------	-----------	------------	------------	---------------	------------	-------------	---------------	-------------	--------------	-------------	---------------------

	Word	Excel	Power Point	Outlook Express
F1	Help	Help	Help	Help
F2	New	New	New	New
F3	Open	Open	Open	Open
F4	Save	Save	Save	Switch ID
F5	Edit	Edit	Edit	Edit

	Word	Excel	Power Point	Outlook Express
F6	B	B	B	N/A
F7	Spell	Spell	Spell	N/A
F8		N/A.	N/A	N/A
F9		N/A		Reply
F10	Search	Search	Search	Forward
F11	N/A	N/A	Slide design	Send
F12	Task Panel	Task Panel	Task Panel	N/A

Click the “NumLock” key to activate numerical keypad function. Press the key again to return to letter input.



Sleep Mode

To save power consumption, this keyboard will enter into sleep mode automatically after two minutes left unused. LED light of the trackball will go off and mouse cursor will have no movement temporarily.

Sleep mode of optical trackball does not affect input function of other standard keys. Press and release the trackball to wake up the sleep mode and to recover the trackball function.

CE and FCC Approved

This device complies with Part 15 of the FCC Rules. Operation is subject to the following two conditions: (1) this device may not cause harmful interference, and (2) this device must accept any interference received, including interference that may cause undesired operation.

6MNU0700000US-A0